

MOUNT GAY®

Est. **1703** Barbados
Rum

Waikawa Boating Club (Inc)

Sentinal Rock – Coastal Race

4th November 2017

Sailing Instructions

The Organising Authority is the Waikawa Boating Club (Inc), ('WBC').

Start Boat:

Duty Officer:

Race Officer: Anna Gibbs

1 RULES

- 1.1 The racing will be governed by the rules as defined in – Racing Rules of Sailing 2017-2020 (RRS) and the following YNZ safety regulations will apply.
- 1.2 Keelers and multihulls must have a current category 3 safety certificate and carry either a life raft or an approved inflated dingy.
- 1.3 Competitors shall keep clear of ships over 500 tonne
- 1.4 The International Rules for Preventing Collisions at Sea shall apply between sunset and sunrise (IRPCAS)
- 1.5 Safety checks may be made on any yacht at any time.
- 1.6 Should there be any conflict between the Notice of Race (NOR) and the Sailing Instructions (SI's) the SI's shall prevail. This amends RRS 63.7

2 CHANGES TO THE RACING RULES

Racing rules will be changed as follows

- 2.1 Yachts with lifting keels shall have keels locked in the down position and not moved whilst racing. This changes RRS 51.
- 2.2 Yachts with movable ballast, in the form of a canting keel or water ballast may move that ballast to increase or decrease weight, or to change trim or stability. This changes RRS 51.
- 2.3 Powered winches, either electric or hydraulic are permitted. This changes RRS 52.
- 2.4 RRS 52 shall not apply to the adjustment of canting keel or water ballast
- 2.5 Between the hours of sunset and sunrise the International Rules for Preventing Collisions At Sea (IRPCAS) shall apply. This changes the rules, part 2.

3 ELIGIBILITY AND ENTRY

- 3.1 Entry is open to all self-righting monohull yachts of not less than 6.0 meters in hull length.
- 3.2 All yachts competing will be issued with a WBC handicap
- 3.3 Entry fee for the race is \$15.00

4 NOTICES TO COMPETITORS

- 4.1 Notices to competitors will be posted on the WBC Notice Board no later than 1900 on the 3rd of November.

5 CHANGES TO SAILING INSTRUCTIONS

- 5.1 Any changes made to the Sailing Instructions prior to the pre-race briefing will be notified at the briefing and posted on the WBC website

6 SCHEDULE OF EVENTS

- 6.1 Race briefing will be held at the WBC clubrooms on Friday 3rd November at 1900. Skippers must attend.
- 6.2 Start time 0930 Saturday 4th November.

7 MARKS AND COURSES

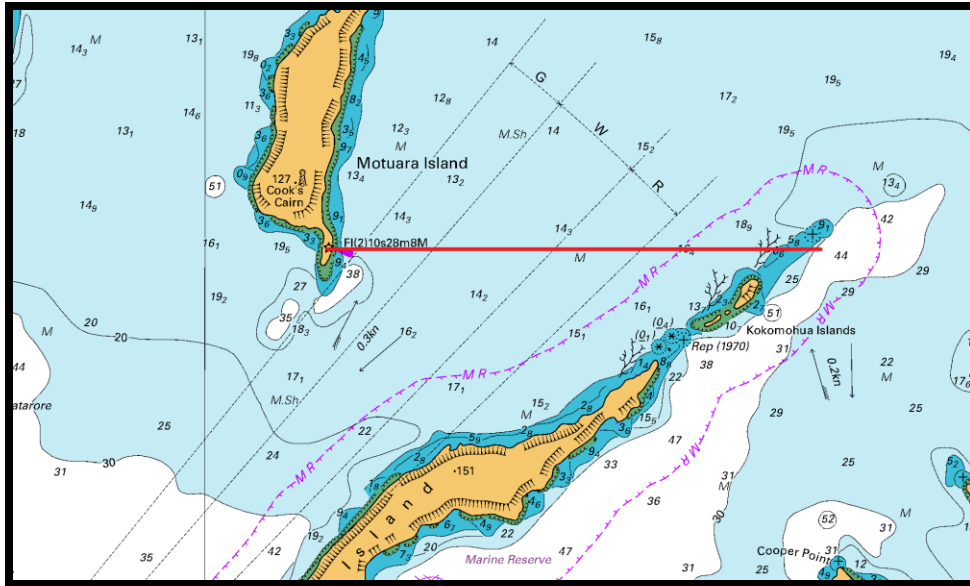
- 7.1 Start at Motuara, Sentinel Rock to Port, Finish at Motuara.

8 THE START

- 8.1 The race will be started on VHF channel 1 and will have a 5 minute warning signal, a 4 minute signal, a 1 minute signal then the start. There will be no flags used.
- 8.2 Yachts are to radio duty boat [REDACTED] on VHF channel 1 prior to the start to advise of intention to race and total POB.
- 8.3 The starting line will be a line from the duty boat [REDACTED] and the light on the small island at the South Eastern end of Motuara Island.

9 THE FINISH

- 9.1 There will be no finish boat on station.
- 9.2 Yachts are responsible for taking their own finish times with GPS as the source.
- 9.3 Each yacht is to advise maritime radio, within 30 minutes of finishing, its finish time via VHF channel 16. Please also advise your finish time to Anna Gibbs.
- 9.4 The finish line will be when the light on the south western end of Motuara Island bears 270 degrees Magnetic on a hand held compass.



10 SHORTENED COURSE

10.1 The race officer/duty officer may shorten the course at any stage, this will be done via VHF channel 16 so boats must maintain a listening watch of VHF channel 16 whilst racing.

11 RADIO REGULATIONS

11.1 Prior to the start all yachts are required to keep a listening watch on VHF channel 1

11.2 After the start and while racing yachts shall maintain a listening watch on VHF channel 16

11.3 Radio Schedules

- Maritime radio will call all yachts that are still racing, and yachts that have withdrawn from the race but not yet made it back to port on VHF channel 16 at 1300 hours, you will then be advised of which channel to change to for the sched.
- When called by maritime radio, a yacht shall report her current position in latitude and longitude, the mark to which she is heading and her current speed.

11.4 Any yacht that retires from the race shall notify Maritime Radio VHF channel 16 as soon as possible, and advise they why they have withdrawn from the race, alternatively phone them on 0800 MARITIME.

11.5 A yacht shall not transmit or receive radio communications that are not available to all boats. This restriction also applies to mobile telephones. Boats are permitted to communicate with the media for the purpose of publicity and promotion but NOT to gain information to help their performance.

12 PROTESTS AND REQUESTS FOR REDRESS

12.1 For protests where only a rule of Part 2 or rule 31 is alleged to have been broken, an arbitration hearing will be offered prior to any formal hearing.

12.2 Protests and requests for redress or reopening shall be submitted to a WBC race official within the appropriate time limit.

12.3 The protest time limit is 2 hours after the finish of the last yacht

12.4 Competitors will be informed of hearings of which they are parties

12.5 The protest committee may take evidence in any way it considers appropriate and may communicate its decision orally. This changes RRS 63.6

13 SCORING

13.1 The low points scoring system RRS appendix A4 will apply.

13.2 To request correction of an alleged error in posted race results, a boat may request a review by emailing gibbs.a@gmail.com

14 **RACE RESULTS**

14.1 Results will be posted on the WBC website www.waikawaboatingclub.co.nz

15 **PRIZES**

15.1 The prize giving for the race will be held on Saturday 4th November at Furneaux Lodge.

15.2 All yachts are eligible for prizes but only WBC members are eligible for trophies.

16 **SAFETY REGULATIONS**

16.1 All yachts entering the race must submit a copy of a minimum YNZ category 3 safety certificate.

16.2 All yachts must carry their registered sail numbers on mainsails, trysails, all spinnakers and headsails.

16.3 All forms of navigational aids, GPS, radar, etc are permitted. GPS should be regarded as a navigational aid, not a navigational system.

17 **ADVERTISING**

17.1 The organizing authority may require all participating boats to display the event sponsor's advertising in accordance with World Sailing (WS) regulation 20 – Advertising code.

18 **TRASH DISPOSAL**

18.1 Boats shall not put trash into the water. However use of rubber bands or wool to facilitate hoisting of spinnakers and gennakers is acceptable.

19 **ENGINE USE**

19.1 No yacht shall be under power or tow after the preparatory signal. Yachts are permitted to run their engines during the race for the purpose of charging their batteries or other functions (i.e. can't keel, operate winches) but the engine shall not cause the propeller to rotate.

20 **DISCLAIMER OF LIABILITY**

20.1 Competitors participate in the race entirely at their own risk, refer to rule 4. The organizing authority will not accept any liability for material damage or personal injury or death sustained in conjunction with or prior to, during, or after the race.

20.2 Skippers and crew are reminded of their responsibilities on the water in relation to the consumption of alcohol.

21 **INSURANCE**

21.1 Each participating yacht shall be insured with a valid third-party liability insurance with a minimum cover of 1 million for the race.

22 **ADDITIONAL INFORMATION**

22.1 Contact Anna Gibbs
027 3838 160
gibbs.a@gmail.com