



SAILING INSTRUCTIONS (SIs)

WineWorks Marlborough Wine Race

Friday 23rd February 2024

Offshore & Inshore Yacht Racing

Queen Charlotte Sound & Cook Strait

The Organising Authority is the Waikawa Boating Club (Inc)
PO Box 52, Picton 7250
+64 3 573 6798

For further information please contact the Event Organiser events@waikawaboatingclub.co.nz

The notation '[NP]' in a rule of the sailing instructions (SIs) means that a boat may not protest another boat for breaking that rule. This changes RRS 60.1(a). '[DP]' Discretionary Penalty. '[SP]' Standard Penalty.



1 RULES

- 1.1 The event is governed by the rules as defined in The Racing Rules of Sailing 2021-2024.
- 1.2 The Yachting New Zealand Safety Regulations Part II shall apply. The event has both Cat 4 (Inshore) and Cat 3 (Offshore) safety categories. All keel boats must be compliant with the Category requirements of that race.
- 1.3 Should there be any conflict between the Notice of Race (NOR) and the Sailing Instructions (SIs) the SIs shall prevail. This changes RRS 63.7.
- 1.4 Yachts with movable ballast, in the form of canting keel or water ballast may move that ballast to increase or decrease weight, or to change trim and stability. This changes RRS 51. RS 52 shall not apply to the adjustment of canting keel or water ballast.
- 1.5 Powered winches, either electric or hydraulic, are permitted. This changes RRS 52.
- 1.6 Marlborough district Bylaws dictate the proximity to vessels over 500 Tonnes.
- 1.7 Appendix T, Arbitration will apply.
- 1.8 All Boats are required to operate a PredictWind tracker on a smartphone or similar device whilst racing. Guidance and help will be given at briefing.

2 CHANGES TO SAILING INSTRUCTIONS

- 2.1 Any change to the sailing instructions or change to schedule will be emailed to the skipper before 2000 the day before it will take effect.
- 2.2 Changes to a sailing instruction may be made on the water by notifying competitors on VHF channel 77 and after start on VHF channel 1. The signal boat will require confirmation from each boat that they have received the change.
- 2.3 Notices to competitors will be posted on the official notice board located at Waikawa Boating Club.
- 2.4 The race office is located at Waikawa Boating Club.

3.0 COMMUNICATIONS

- 3.1 Yachts must register with the start boat prior to the race start with boat name and number of persons on board. Offshore fleet to register with 'Freedom'. Inshore fleet to register with 'Ray White'.
- 3.2 On the water, the race committee intends to monitor and communicate with competitors on VHF radio channel 77 for the start and will change to VHF channel 1 after start.



- 3.3** The following communications may be made by the race committee on VHF channel 77 or on VHF channel 1 after the start of a race, including: Time checks, race area, schedule changes, location of race committee vessel, alternate preparatory signals, courses, change of courses, shortening, postponement, abandonment, starting signals, recalls, times of finishers.
- 3.4** [DP] While racing except in an emergency, a boat shall not make voice or data transmissions and shall not receive voice or data communication that is not available to all boats.

4 CODE OF CONDUCT

- 4.1** [DP] Competitors and support persons shall comply with reasonable requests from race officials.

5 SIGNALS MADE ASHORE

- 5.1** There will be no signals ashore.

6 SCHEDULE OF RACES

6.1

<i>Day/Date</i>	<i>Class</i>	<i>Number of races</i>	<i>Time of First Warning Signal</i>	<i>Class Flag</i>
23/02/2024	Offshore	1	09:55	Fluoro Yellow Pennant
23/02/2024	Inshore	1	09:25	Fluoro Pink Pennant

7 CLASS FLAGS

- 7.1** Class flags are described in 6.1.

8 RACING AREA

- 8.1** The racing area is the Queen Charlotte Sounds and Cook Strait.

9 COURSES

- 9.1** The diagrams in SI Addendum B shows the courses, the order in which marks are to be passed, and the side on which each mark is to be left.

10 MARKS

- 10.1** Turning mark descriptions are shown in Addendum B - courses.

11 OBSTRUCTIONS



- 11.1** All ferries and ships over 500 tonnes shall be classed as an obstruction.
- 11.2** (SP) There are specific “Moving Prohibited Zones” around ships over 500 tonnes in the Marlborough Sounds. No vessel shall enter the zone around the ships, which extends 500 meters ahead, 50 meters down either side and 50 meters astern. This is a Marlborough District Council (MDC) Navigational bylaw.
- 11.3** (SP) In the event of a complaint from a ferry(ship) pilot/master or harbour master that identifies a vessel/s that did not abide by the rules as in 1.6. the impeding named vessel (s)will be scored DNE for that race.

12 THE START

- 12.1** Races will be started using RRS 26 with the warning signal made 5 minutes before the starting signal.
- 12.2** The starting line is between a staff displaying an orange flag on the signal vessel and the mark as described in Addendum B.
- 12.3** If any part of a boat’s hull is on the course side of the starting line at her starting signal and she is identified, the race committee will attempt to Broadcast her name and/or sail number on VHF channel 77. Failure to a make a broadcast, failure of her to hear such a broadcast, or the order in which boats are broadcast will not be grounds for a request for redress. This changes RRS 62.1(a).
- 12.4** A boat that does not start within 20 minutes after her starting signal will be scored Did Not Start without a hearing. This changes RRS A5.1 and A5.2.

13 THE FINISH

- 13.1** The finishing line is between ‘Freedom’ and the finishing mark described in Addendum B.
- 13.2** [DP] If the race committee is absent when a boat finishes, she shall report her finishing time, and her position in relation to nearby boats, to the race committee at the first reasonable opportunity.
- 13.2** In the event of a shortened course, the race officer will communicate with each fleet via VHF channel 1.

14 PENALTY SYSTEM

- 14.1** For the Offshore and Inshore fleets, RRS 44.1 is changed so that the Two-Turns Penalty is replaced by the One-Turn Penalty.

15 TIME LIMITS

15.1 The Race Time Limit (see RRS 35) are shown in the table below.

Class	Race Time Limit
Offshore	1530 Hrs 23/02/2024
Inshore	1530 hrs 23/02/2024

16 HEARING REQUESTS

16.1 For each class, the protest time limit is 60 minutes after the last boat in that class finishes or the race committee signals no more racing today, whichever is later to notify the race committee on 'Freedom' of a protest.

16.2 Protest request forms are available from the race committee at Resolution Bay, are to be filled in and submitted no later than 120 minutes after the last boat in that class finishes or the race committee signals no more racing today, whichever is later.

17 SCORING

17.1 The scoring system is as follows: The boats TCF (Handicap) will be assigned for the event and the decision of the handicapper will be final.

18 [DP][NP]SAFETY REGULATIONS

18.1 When the signal boat is on station yachts are required to call in on VHF 77 confirming intention to race and persons on board.

18.2 A boat that retires from a race shall notify the race committee at the first reasonable opportunity on VHF channel 77 or VHF channel 1.

19 EQUIPMENT AND MEASUREMENT CHECKS

19.1 A boat or equipment may be inspected at any time for compliance with the class rules, notice of race and sailing instructions.

20 PRIZES

20.1 Prizes will be given for Line Honours, 1st place, 2nd place, and 3rd place for each fleet.

- Line Honours – Wine
- 1st Place - \$450
- 2nd Place - \$350
- 3rd Place - \$250



21 RISK STATEMENT

21.1 RRS 3 states: 'The responsibility for a boat's decision to participate in a race or to continue to race is hers alone.' By participating in this event each competitor agrees and acknowledges that sailing is a potentially dangerous activity with inherent risks. These risks include strong winds and rough seas, sudden changes in weather, failure of equipment, boat handling errors, poor seamanship by other boats, loss of balance on an unstable platform and fatigue resulting in increased risk of injury. Inherent in the sport of sailing is the risk of permanent, catastrophic injury or death by drowning, trauma, hypothermia, or other causes.

23 INSURANCE

23.1 Each participating boat shall be insured with valid third-party liability insurance with a minimum cover of \$5,000,000 per incident or the equivalent.



Addendum B Courses

Offshore

Start Between 'Freedom' displaying an orange flag and Bottle Rock.
Starting in a Northerly direction.

Cape Jackson Lighthouse (Starboard)

Walker Rock (Starboard)

White Rocks (Starboard)

Motuara North Cardinal (Port)

Finish Between 'Freedom' and Bottle Rock.
Finishing in a Southerly direction.

Inshore

Start Between 'Ray White' and an orange buoy displaying an orange flag.
Starting in a Northerly direction.

Allports Island (Starboard)

Karaka Point 5 knot speed buoy (Port) Northeastern Buoy

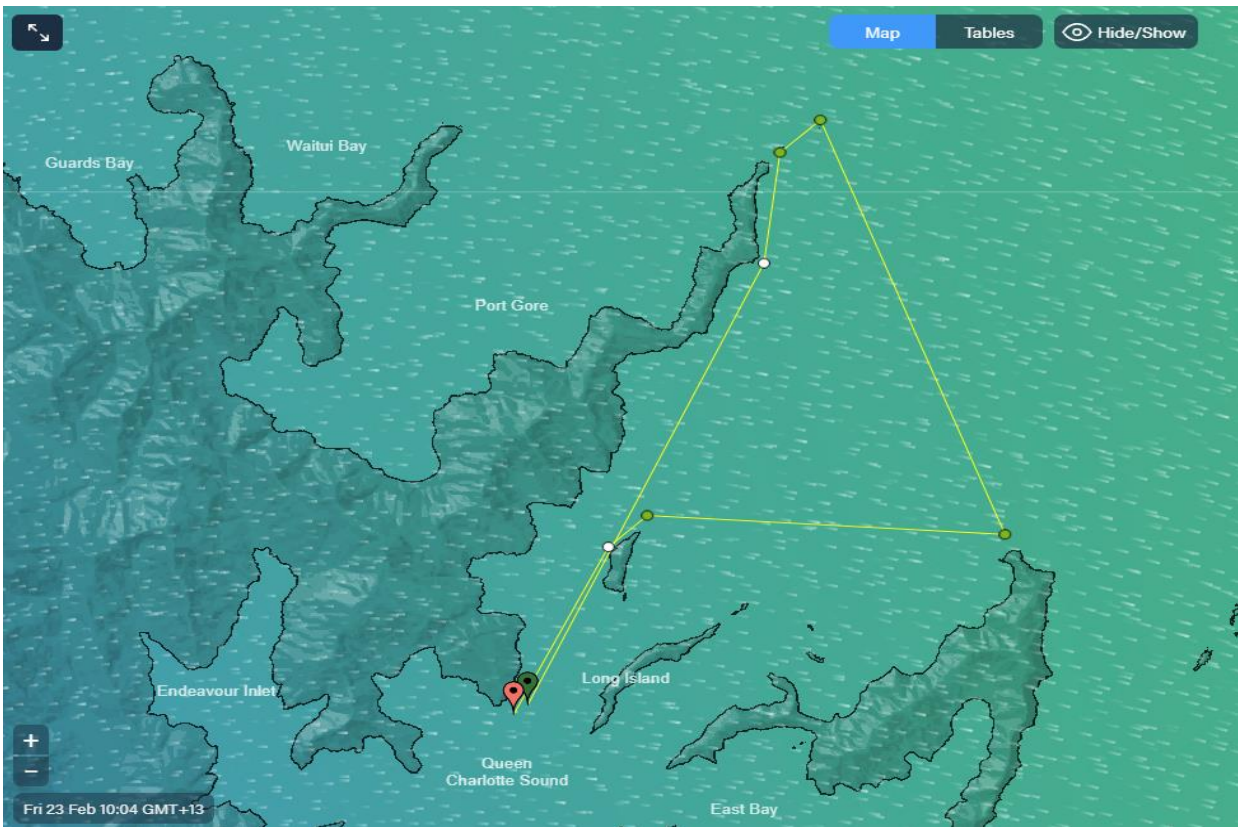
Luke Rock (Starboard)

Blumine Island (Starboard)

Pickersgill Island (Port)

Finish Between 'Freedom' and Bottle Rock.
Finishing in a Northerly direction.

Offshore Course



Inshore Course

